

# M.V. "THOR MAXIMUS"



<p><b>Owner :</b> Thoresen Shipping Singapore Pte. Ltd.</p> <p><b>Manager:</b> Thoresen &amp; Co.,( Bangkok) Ltd.</p> <p><b>Built : 2005</b> OSHIMA SHIPBUILDING CO.LTD ,JAPAN NO.10395</p> <p><b>Classification : NK</b></p> <p><b>Vessel's Type : Bulk Carrier</b></p> <p><b>Flag : Singapore</b></p> <p><b>Call Sign : 9V2805</b></p> <p><b>Inmarsat C: 456-475-610</b></p> <p><b>Fleet Broadband Phone: +870773203032</b></p> <p><b>E-mail : Thor.Maximus@hmcmail.com</b></p>	<p><b>Dimensions:</b> LOA 189.99 m. LBP 185.79 m. BREADTH 32.26 m. DEPTH 17.62 m.</p> <p><b>Tonnage:</b> GRT 30,743 MT. NRT 18,539 MT.</p> <p><b>DWT / DRAFT / FREEBOARD:</b></p> <p>TROPICAL 57,152 MT / 12.762 M / 4.899 M SUMMER 55,695 MT / 12.502 M / 5.159 M WINTER 54,239 MT / 12.242 M / 5.419 M TROP FRESH WATER 57,119 MT / 13.047 M / 4.614 M FRESH 55,696 MT / 12.787 M / 4.874 M</p> <p><b>Hatch Dimensions</b></p> <p>NO.1 16.74 X 18.6 NO.2 22.32 X 18.6 NO.3 18.60 X 18.6 NO.4 21.39 X 18.6 NO.5 22.32 X 18.6</p> <p><b>Tank top strength:</b></p> <p>NO.1 CARGO HOLD CARGO PERMISSIBLE LOAD 15,200 MT/ DECK STRENGTH 24.5 MT/M<sup>2</sup> NO.2 CARGO HOLD CARGO PERMISSIBLE LOAD 14,000 MT/ DECK STRENGTH 15.5 MT/M<sup>2</sup> NO.3 CARGO HOLD CARGO PERMISSIBLE LOAD 22,100 MT/ DECK STRENGTH 26.9 MT/M<sup>2</sup> NO.4 CARGO HOLD CARGO PERMISSIBLE LOAD 13,300 MT/ DECK STRENGTH 15.5 MT/M<sup>2</sup> NO.5 CARGO HOLD CARGO PERMISSIBLE LOAD 17,800 MT/ DECK STRENGTH 22.8 MT/M<sup>2</sup></p> <p><b>Ventilation: Natural</b></p> <p><b>Australia hold Ladder : Fitted</b></p> <p><b>CO2: FIXED CO2 FIRE EXTINGUISHING SYSTEM IN ENGINE ROOM</b></p>	<p><b>Cargo Gears : 4 DECK CRANES</b> SWL 30.0 MTX26M ON HOOK DUTY SWL 24.0 MTX26M ON GRAB</p> <p><b>Machinery : MITSUI-MAN B &amp; W</b> /6S50 MC-C MCO : 11,160 BHP (8,208 KW) X 110.0 RPM CSO : 9,485 BHP (6,976 KW) X 104.2 RPM</p> <p><b>A/E : DAIHATSU DIESEL 5DK-20</b> : 3 SET OUTPUT 685 PSX900RPM</p>
---	---	---

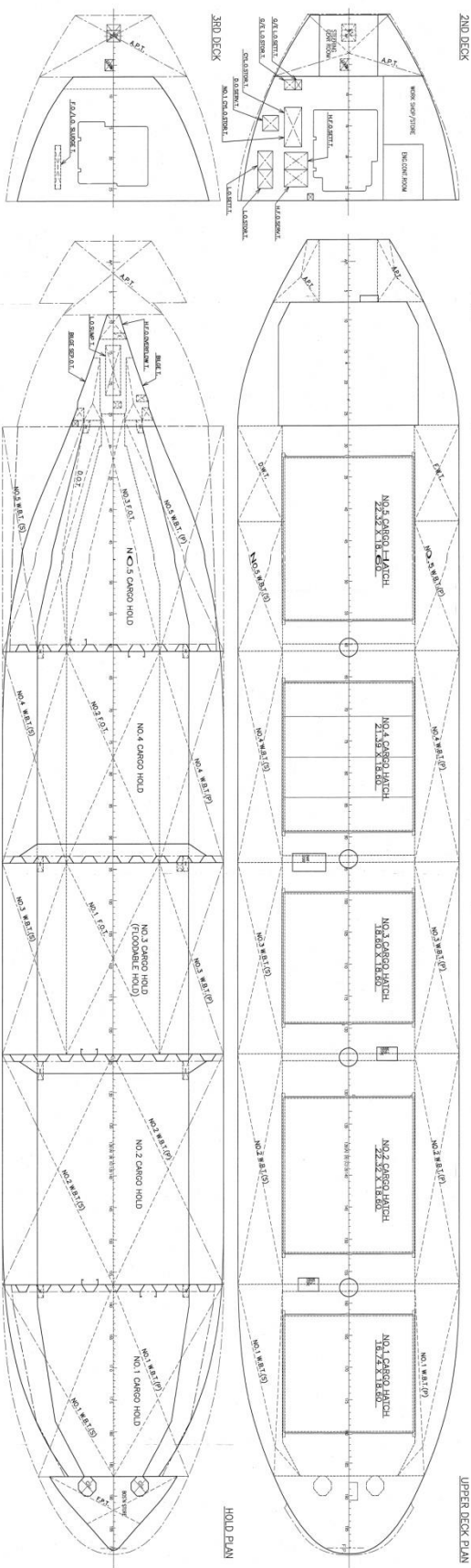
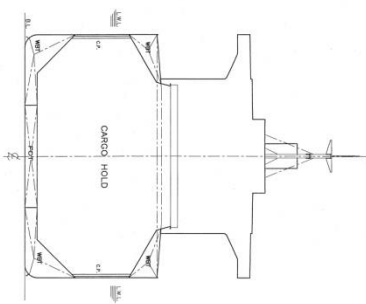
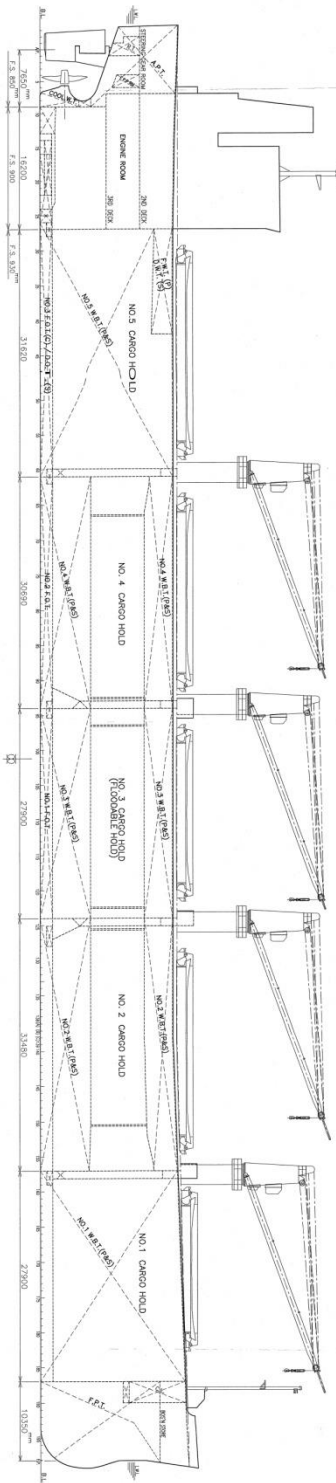
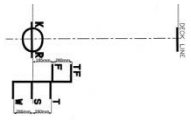
## Capacities:-

Compartment:	Grain (M <sup>3</sup> )	Bale (M <sup>3</sup> )
	Hold	Hold
No 1	11,150	11,053
No 2	16,322	15,996
No 3	14,060	13,754
No 4	14,889	14,621
No 5	13,451	13,374
Total	69,872	68,798

\* The details in this brochure are for guidance only and no warranty or representation is given nor liability accepted, by owners as to the accuracy of such details. \*

# M.V. "THOR MAXIMUS" CAPACITY PLAN WITH DEADWEIGHT SCALE

SCALE 1 : 200



PRINCIPAL PARTICULARS	
TUNDRY	6.71
LENGTH	89.73
BREADTH	18.75
DEPTH	17.25
TUNDRY DEPTH	10.71
TUNDRY DEPTH (AT SHARP POINT)	10.50
GROSS TONNAGE (INTERNATIONAL)	3013
NET TONNAGE (INTERNATIONAL)	1819

GROSS TONNAGE REGISTERED AT SHARON  
 NET TONNAGE REGISTERED AT SHARON  
 \*NET TONNAGE (NET) OF 1819 IS IN ACCORDANCE WITH THE TONNAGE MEASUREMENT CONVENTION, 1969