

# M.V. "THOR BREEZE"



**Owner :**

Thoresen Shipping Singapore Pte. Ltd.

**Manager:**

Thoresen & Co., ( Bangkok ) Ltd.

**Built : 2013**

**Classification :** DNV

**Vessel's Type :** Bulk Carrier

**Flag :** Singapore

**Call Sign :** 9V6895

**Inm-Fbb Phone:** +870773203214

**Iridium Phone:** +881641499375

**E-mail :** thor.breeze@hmcmail.com

**Dimensions :** LOA : 190.0 m.  
LBP : 183.05 m.  
BREADTH : 32.26 m.  
DEPTH : 17.50 m

**Tonnage :** GRT 32,578  
NRT 18,070

WDWT: 52,072 / Draft 12.279m / TPC 63,116  
SDWT: 53,506 / Draft 12.620m / TPC 65,068  
TDWT: 55,061 / Draft 12.801m / TPC 66,105

**Hatch Dimensions: 5 Holds / 5 hatches**

H1 : 19.20 x 22.40 m.  
H2 : 21.60 x 22.40 m.  
H3 : 21.60 x 22.40 m.  
H4 : 21.60 x 22.40 m.  
H5 : 21.60 x 22.40 m.

**Ventilation :** Natural

**Australia hold Ladder :** Yes

**CO2 :** Fixed CO2

**Cargo Gears :** 4 x 36 Ton SWL  
MACGREGOR-HAGGLUNDS, GLB3628  
(Hydraulic FOLDING)

**Ship's Grab :** 4 x 12.0 cum. SMAG  
(Hydraulic FOLDING)

**Main Engine:** DOOSAN.MAN B&W 6S50MC-C

**Auxiliary Engine :** 3 sets x DAIHATSU DIESEL  
( Type:6DK-20 ), 770KW/720RPM

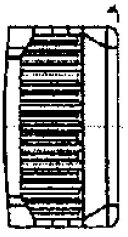
**Tank top strength:**

#1, 5 : 25.0 T/m2, # 3 : 25.0 T/m2  
#2, 4: 25.0 T/m2  
Hatch cover: T/m2  
Upper dk excl. hatch end : T/m2

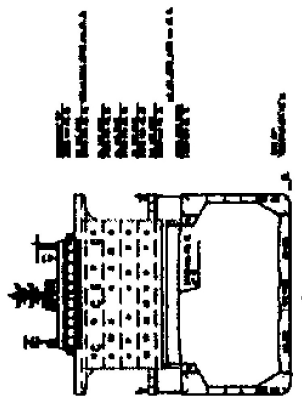
**Capacities:-**

Compartment:	Grain		Bale	
	Cum.	Cft.	Cum.	Cft.
No 1	2,437.9	439,240.7	12,189.1	430,454.4
No 2	13,395.3	473,051.0	13,127.3	463,586.6
No 3	13,397.0	473,111.0	13,129.1	463,650.2
No 4	13,395.2	473,047.5	13,127.3	463,586.7
No 5	13,319.8	470,384.7	13,053.4	460,976.9
<b>Total</b>	<b>65,945.1</b>	<b>2,328,834.9</b>	<b>64,626.2</b>	<b>2,282,254.8</b>

**The details in this brochure are for guidance only and no warranty or representation is given nor liability accepted, by owners as to the accuracy of such details. \***



TRANSVERSE BULKHEAD



WELDED SECTION

- SAFETY
- SAFETY
- SAFETY
- SAFETY
- SAFETY
- SAFETY

**SIX HANDBAY BULK CARRIER**

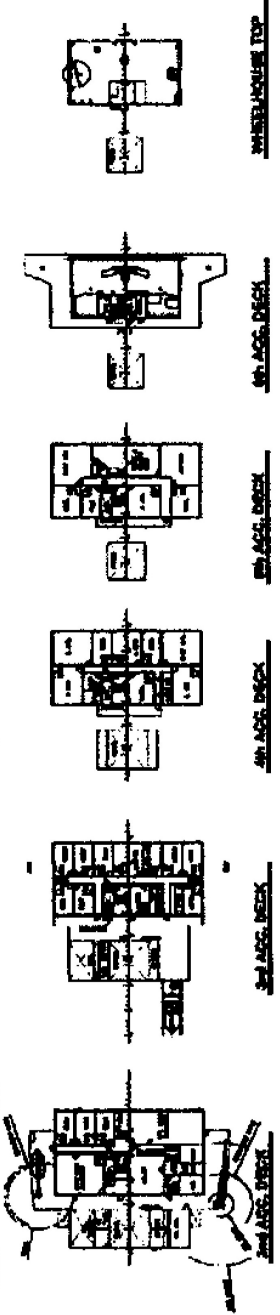
**MAIN DIMENSIONS:**

- LENGTH OVER ALL MAX. 180.00 m
- LENGTH BETWEEN P.P. 180.00 m
- LENGTH BETWEEN P.P. 180.00 m
- BREADTH MOULDED 22.20 m
- DEPTH MLD. TO UPPER DECK 17.80 m
- DEPTH MLD. TO LOWER DECK 11.70 m
- SCANTLING DRAFT MLD. 12.00 m
- STANDARD DRAFT (DISBURS DRAFT) 11.00 m
- LOADING DRAFT (DISBURS DRAFT) 11.00 m
- CARGO CAPACITY 50,000 m<sup>3</sup>

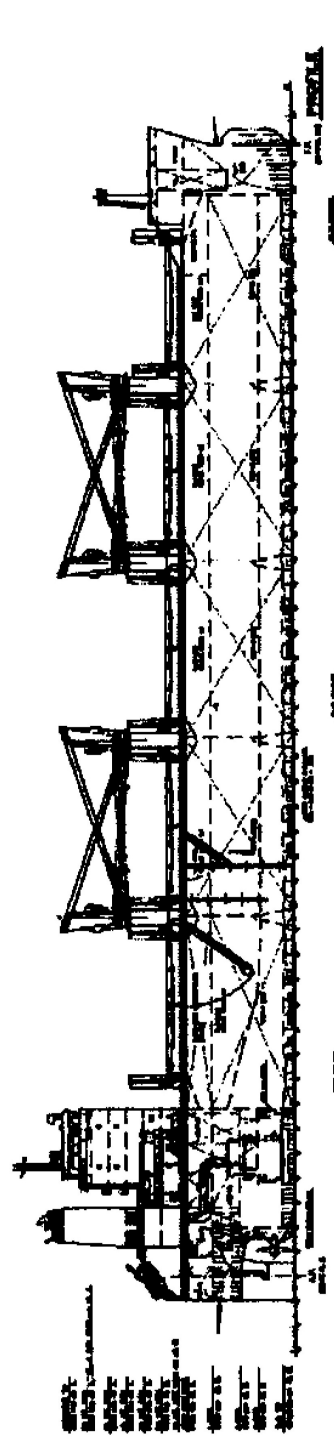
**CLASSIFICATION:**

DNV CLASS BULK CARRIER (SHIP MATIONS (plus loading)  
 SC-A (R1 Z1 OR 3 SHIP)) SUP 80 (GROUP 1) (A1)  
 (SHIP) TECH 111

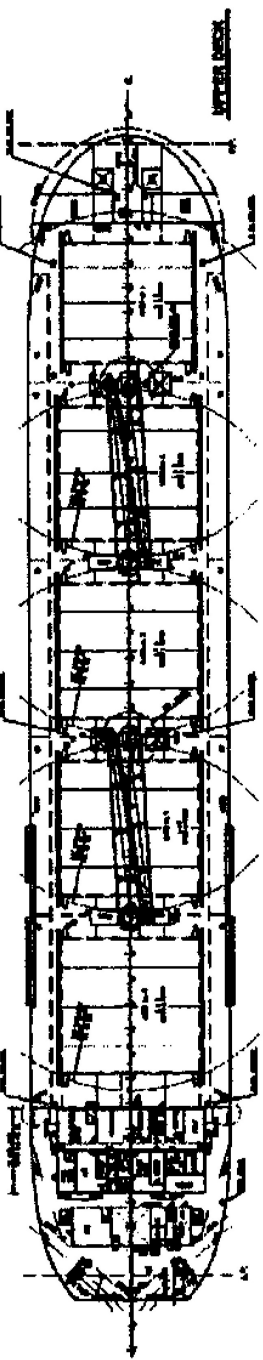
REGISTERED OFFICE: HELSINKI, FINLAND (1118/1118/1118/1118/1118)	
<b>Gretnell / Carl Bro</b>	
DESIGN NO.	25111
DATE OF DESIGN	11/11/11
DATE OF APPROVAL	11/11/11
DATE OF DELIVERY	11/11/11
DATE OF COMPLETION	11/11/11
DATE OF DELIVERY	11/11/11
DATE OF COMPLETION	11/11/11
DATE OF DELIVERY	11/11/11
DATE OF COMPLETION	11/11/11



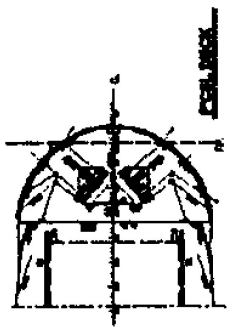
2ND DECK 3RD DECK 4TH DECK 5TH DECK 6TH DECK



WELDED SECTION



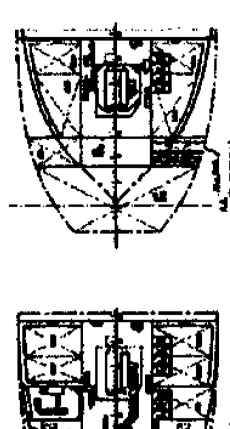
UPPER DECK



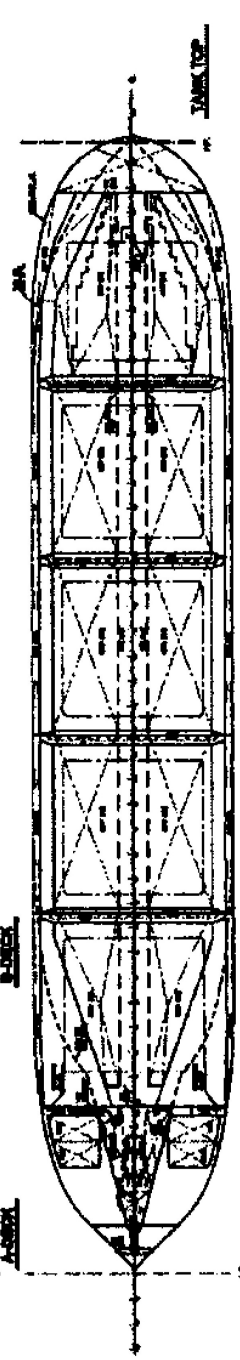
LOWER DECK



DECK



DECK



TANK TOP

- SAFETY
- SAFETY
- SAFETY
- SAFETY
- SAFETY
- SAFETY